

EVALUATION OF FOUR DIETS IN AN EDIBLE CRICKET (*ACHETA DOMESTICUS*) PRODUCTION SYSTEM IN THE ANDEAN FOOTBALLS OF ECUADOR

Tapuy Avilés Yarina

Student Scientific Group: Forest Restoration and Edaphic Bioindicators (ReFoBE), Laboratory of Natural and Applied Tropical Ecology, Universidad Estatal Amazónica Tola, Napo, Ecuador
0009-0001-2357-7916

Vaca Mediavilla Leidy Marisol

Student Scientific Group: Forest Restoration and Edaphic Bioindicators (ReFoBE), Laboratory of Natural and Applied Tropical Ecology, Universidad Estatal Amazónica Tola, Napo, Ecuador
0009-0004-5961-9067

Ríos Guayasamín Pedro

Student Scientific Group: Forest Restoration and Edaphic Bioindicators (ReFoBE), Laboratory of Natural and Applied Tropical Ecology, Universidad Estatal Amazónica Laboratorio de Ecología Tropical Natural y Aplicada, Facultad de Ciencias de la Vida, Universidad Estatal Amazónica Arosemena Tola, Napo, Ecuador
Institute of Forestry and Conservation, University of Toronto, Canada
0000-0003-0588-5146

All content in this magazine is licensed under a Creative Commons Attribution License. Attribution-Non-Commercial-Non-Derivatives 4.0 International (CC BY-NC-ND 4.0).



Abstract: The current demand for food implies greater pressure on ecosystems, so it is necessary to find alternatives for animal production that require less use of natural resources. Insects are a viable alternative in this path. In Ecuador there is research on the production of *Acheta domesticus*, however, there is no information regarding diets that compare biomass gain with local resources. In this study, four diets (squash, cassava leaf, balanced chicken and a mixture of squash and cassava leaf) are evaluated in a completely randomized block design with 4 treatments and 3 repetitions to determine the increase in biomass, mortality, days to maturity, and length of the cricket in the shortest time possible. Exclusive feeding with cassava leaves extended the life cycle by 26% compared to balanced feeding. The chicken feed and the combination of cassava leaf and pumpkin, in turn, showed the lowest mortality: 6.97%, 5.15%, respectively. As well as 27% more length on average. Demonstrating the possibility of obtaining better returns with local resources.

Keywords: Gryllidae, entomophagy, bioeconomy, food alternative.

INTRODUCTION

In recent years, demographic growth and urbanization are gaining momentum and with it the extension of the agricultural and livestock frontier, which increases the demand for food and greater pressure on ecosystems, contributing to climate change (SATTERTHWAITE et al, 2010)., leading to negative ecological effects and increasing food insecurity (VAN BERKUM, 2023). Therefore, it is necessary to find new alternatives for the production of animal species that require less space, that meet protein needs and that in turn promote the appropriate and sustainable use of water, soil and air resources (ARROYAVE et al, 2020).

The consumption of insects can contribute

to food security, mainly due to their nutritional benefits, and is also useful in animal nutrition (AVENDAÑO et al, 2020). *Acheta domesticus* (Linnaeus, 1758) is presented as an alternative with several management experiences already in the region (APOLO; LANNACONE, 2016); despite still requiring details about their breeding methods because there is contrasting information on their toxicological profile (FERNANDEZ-CASSI, 2018; VERVERIS, 2022). Cricket cages can be made with materials such as cardboard, plastic, wood and glass; to provide protection and create a suitable space for crickets (APOLO & LANNACONE, 2015). Being important to provide a large number of hiding places in their breeding, the commonly used materials are egg trays and toilet paper rolls (ORINDA et al, 2021). The boxes need proper ventilation (HANBOONSONG & DURST, 2020).

A. domesticus has the potential to be used in food formulations, in the production of products derived from cereals, but it is dependent on factors such as the physiological state of the crickets, their diet, as well as their method of obtaining (PILCO, 2021).

In the research on diets for the production of domestic cricket to obtain flour, it is stated that the flour that was obtained based on balancing reached a high level of protein, notably surpassing other treatments derived from food scraps, fruits (apple, papaya, guava), and vegetables (cabbage, broccoli, spinach) (VACA, 2020). These insects reproduce quickly, have high growth and feed conversion rates and a reduced environmental impact during their life cycle. They can be raised taking advantage of various flows of food waste (ARELLANO & VELÁSQUEZ, 2017). The cricket, being an omnivorous animal, can efficiently take advantage of many types of food even with their nutritional variations (NAKAGAKI,1991; FAO, 2013) so it can adjust to diets that come from local materials

that facilitate its breeding, and contribute to the use of local resources.

In Ecuador, the production of *A. domesticus* is a recent activity. Several investigations have been carried out, however, there is no timely information regarding a low-cost diet suitable for production in each geographical area, so this study focuses on collecting information on local foods that improve the breeding of *A. domesticus* in rural areas of the country.

METHODOLOGY

LOCATION

The study was carried out in the Selva Alegre parish, located 80 km from the Otavalo Canton, Imbabura Province, Ecuador, its coordinates 0°16' 0" N and 78°34' 60" W (Figure 1). It is located at 1,800 meters above sea level, forming part of the montane evergreen shrub ecosystems of the northern Andes and the lower montane evergreen forest of the Western Cordillera of the Andes (MAE, 2013).

MANAGEMENT AND EXPERIMENTAL DESIGN

In the experiment, four types of foods were handled that constituted the treatments under study: Pumpkin fruit (T1), cassava foliage (T2), balanced chicken (T3) as a control diet according to the research by Arroyave et al. (2020) and a combination of yucca foliage and pumpkin fruit (T4). *A. domesticus* comes from the Crickets Farm in the Plaza Gutiérrez parish, the breeding stock was obtained in the egg state.

Plastic boxes with metal mesh for the cover, vertical cardboard egg trays were used as breeding chambers to provide individual hiding places to avoid contact of the cricket with its own excrement. In addition, drinkers with absorbent fabric and soil to prevent the nymphs from drowning (Figure 2).

The research area was 5 m², it consisted of 12 experimental units of 7425 cm³ that contained 110 microcrickets at the beginning of the study and a total of 1320 individuals. Based on this number of individuals, mortality, biological cycle length, length and weight were estimated. The final values were averaged for each experimental unit, and statistical analyzes were performed with them.

An Analysis of Variance (ADEVA) was performed for all the variables evaluated.

In the ADEVA, the treatments were considered as fixed factors, while the blocks (replications) were random. When there were significant differences ($p \leq 0.05$) between treatments, the Tukey test was applied to separate means, using the emmeans package (LENTH, et al. 2023). As a complement to the ADEVA, a possible relationship between diet and the biomass achieved by adults was determined. Statistical analyzes were done using R studio software (TEAM C.R.M., 2014). ggpubr (KASSAMBARA, 2023) was used for the graphics.

DIET COST

To determine the cost of the diets, the price of inputs in the main agricultural stores in the parish was investigated. With this price base and the nutritional proportion, during the fourteen weeks per treatment, the following calculation was carried out in which the total price was obtained.

$$\text{Quantity (g)} * \text{Unit price (USD)} = \text{Total USD}$$

Cassava foliage does not represent any cost since it is a residue of the crops and is collected as food for crickets.

Before feeding the food, 50 g of each diet was weighed fresh, except for the balanced chicken, which was 25 g. Afterwards, a dehydration process was carried out in a gas lamp at 30°C. The dehydration time for pumpkin was 2

hours for 3 days, cassava leaves 2 hours for 2 days, chicken feed 1 hour in 1 day and for the pumpkin + cassava leaves mix 2 hours in 1 day. A difference was made between the wet weight and the dry weight of each of the foods to determine the exact amount of water in g. The amount initially planned for all diets was 100 g in half-liter tubs. Consequently, the water supply for each diet was as follows: pumpkin 143 g, cassava leaves 128 g, chicken feed 103 g, squash + cassava leaves mix 137 g. Food and water were provided every three and seven days respectively. Cleaning was carried out every three days, completely replacing the food provided.

RESULTS AND DISCUSSION

The life cycle of *Acheta* spp. It has three phases: egg, nymph and adult. The time required to complete each stage varies slightly depending on the species. Crickets have incomplete metamorphosis development and therefore do not enter a pupal stage, but instead hatch from the egg into a nymph that resembles the adult (HANBOONSONG & DURST, 2020).

Patton (1967) mentions that the protein content of the diets influences maturity or development, since he applied a holistic diet that contained 25% protein and this favored the days to collection being an average of 56 days. With a richer, more varied diet and with high temperatures (26 - 32°C), crickets will grow faster (PROTEINSECTA, 2018).

Our study confirms these findings, given that raw diets with higher protein value such as the combination of pumpkin with 4.4 to 14.5% (MAYNARD, 2002), cassava leaves with 6.05% (GIL, 2015) and the balanced chicken with 19% protein (CASTILLO et al., 2021) influenced the total duration of the biological cycle in days (Figure 3), since there were no differences between T3 (80.0±6.24), T4 (88.7 ±6.03) and T1 (85±13.58), while

T2 (108±2.65) extended the insect cycle ($F(3,12) = 6.1, p < 0.05$). These results differ fundamentally due to the temperature values of the study area, which ranged between 14 and 25°C, further prolonging the biological cycle.

The mortality percentage was higher in T2 (23.64±2.65) and T1 (17.27±13.58), while T3(6.97±6.24) and T4 (5.15±6.03) obtained a larger population at the end of the experiment ($F(3,12) = 6.1, p < 0.05$). Crickets fed minimally processed diets or food waste experienced higher mortality (LUNDY & PARRELLA, 2015). According to Collavo (2005) the mortality of the population is affected by the quality of the food. In this work, low mortality percentages were obtained in treatments with unprocessed diets, except for balanced diets.

The greatest length was obtained in T4 (27.49±1.20), followed by T3 (27.70±0.68), these being statistically greater than T1 and T2 ($F(3,12) = 8.7, p < 0.05$). *A. domesticus* obtained a greater weight with the combination of cassava+squash (0.97±0.06) tending to be greater than the other treatments, without obtaining differentiation between their means ($F(3,12) = 3.7, p = 0.08$). In the relationship between weight and length, treatments T3 and T4 had the best effects, while T2 was the worst regarding the weight reached by the insects. Results found by Patton (1978) regarding the average weight of 3 individuals is 0.91g with a holidic diet containing 25% protein and the values mentioned are similar to those achieved in this study: in T3 a fresh weight of 0.90 g was obtained. with a diet based on balanced chicken with 19% protein and in T4, 0.97 g of fresh weight with a mixed diet of pumpkin and cassava foliage with protein content of 14.5% and 6.05%. For its part, Vaca (2020) obtained an average weight of 0.94 g using a diet based on balanced fish with 42% protein; In short, there is a similarity in the weight obtained in comparison to the high percentage of protein

in the aforementioned works.

Regarding the length, there is coincidence with the work of Vaca (2020), which reports lengths between 2-2.5 cm for sacrifice, very similar to those obtained in this work (2.4 to 2.8 cm).

TOTAL DIET COSTS

It is evident that the unit prices for each 50 grams of food were low cost for a feeding time of 14 weeks, however, the lowest price considering its yield was the pumpkin fruit + cassava foliage with a total expense of 0.56 cents; while, the food with the highest price was the balanced chicken with 3.78 cents of a dollar throughout the experiment, due to the fact that, being a food that easily rots, it was changed three times a week, therefore, it is considered that the Treatment 4 (pumpkin and cassava foliage) is the most accessible for the production of *A. domesticus*.

Portillo (2017) indicates that, when using balanced fish, potatoes, and cabbage to feed crickets, an average food expense of 4.12 USD was incurred in a period of a month and a half, while the food that was used in this trial had an average cost of \$2.94 over 14 weeks for

each treatment. Being the accumulated cost of the balanced chicken, pumpkin and cassava leaves, 8.82 USD.

CONCLUSIONS

The diet selection criteria for breeding *A. domesticus* was based on including foods that were produced in the Selva Alegre parish and that have nutritional value for the sustenance of the crickets. The duration of the biological cycle was between 80 to 88 days with the exception of treatment two (T2) based on cassava leaves, with an extension up to 108 days, this diet being the one with the lowest protein intake.

The effect on insect mortality was low in the treatments that reached the best biomass values (6.97% and 5.15%). The combination of pumpkin plus cassava leaves and chicken feed obtained the best weight and length, so it is recommended to use them as a diet in the production of *A. domesticus* in the Selva Alegre parish, Province of Imbabura. The mixture of pumpkin plus cassava leaves must be prioritized as an alternative source of protein because they are locally produced and low-cost products.

REFERENCES

- APOLO, LA; LANNACONE, J. Crianza del grillo (*Acheta domesticus*) como fuente alternativa de proteínas para el consumo humano. **Scientia**, v.17, n.17, pág.161–173, sept. 2015. Disponible en <https://doi.org/10.31381/scientia.v17i17.389>. Acceso en: 12 feb. 2021
- ARELLANO, D; VELASQUEZ, S. **Manual. Cría de Invertebrados para alimentación complementaria**. Ministerio del poder popular para el ecosocialismo y aguas. Gobierno Bolivariano de Venezuela. Fundación Nacional de Parques, Zoológicos y Acuarios. Caracas, 2017. 28 p.
- ARROYAVE, O.J.; CHAMORRO, J.R., LONDOÑO, L., OCHOA, A.F., OSPINA J.A. Evaluación de tres tipos de dieta durante la etapa de engorde del grillo común (*Gryllus assimilis* L.). **Revista Colombiana de Investigaciones Agroindustrial**, v.7, n.1 pág.69-74, enero/jun. 2020. Disponible en <https://doi.org/10.23850/24220582.2972>. Acceso en: 10 feb. 2021
- AVENDANO, C; SANCHEZ, M; VALENZUELA, C. Insects: an alternative for animal and human feeding. **Rev. chil. nutr.**, Santiago, v. 47, n. 6, p. 1029-1037, dic. 2020. Disponible en: <http://www.scielo.cl/scielo.php?script=sci_arttext&pid=S0717-75182020000601029&lng=en&nrm=iso>. Acceso en: 13 feb. 2021.
- CASTILLO, A.D.; ESCOBAR, P.R., LAZO, A.M., SERRANO, L., SOLANO, N.S., MARTÍNEZ, E. *Comparación de contenido de proteína, grasa, calcio y fósforo de grillos (Acheta domesticus) en su etapa juvenil, alimentados con diferentes sustratos*. **Agrociencia**, agosto. 2021. Disponible en: <http://www.agronomia.ues.edu.sv/agrociencia>. Acceso en: 13 feb. 2021.

COLLAVO, A.; GLEW, R.H., HUANG, Y.S., CHUANG, L.T., BOSSE, R., PAOLETTI, M.G., Paoletti, M. “**House cricket small-scale farming**”. 2005. pp. 519-545. Disponible en: https://www.researchgate.net/publication/259852827_HOUSECRICKET_SMALLSCALE_FARMING Acceso en: 13 feb. 2021.

FAO. 2013. **La contribución de los insectos a la seguridad alimentaria, los medios de vida y el medio ambiente**. (en línea). Disponible en: <http://www.fao.org/3/i3264s/i3264s00.pdf>. Acceso en: 5 enero. 2020

FERNANDEZ, SUPEANU, A., JANSSON, A., BOQVIST S., VAGSHOLM I. 2018. Novel foods: a risk profile for the house cricket (*Acheta domestica*). **EFSA Journal**, v.16, n.1, pág.15, July. 2018 Disponible en: <https://doi.org/10.2903/j.efsa.2018.e16082>. Acceso en: 15 feb. 2021

GIL, J. **Uso de la yuca en alimentación animal**. Corporación CLAYUCA. 2015. 4 p. Disponible en: <http://hdl.handle.net/20.500.12324/37043>. Acceso en:10 feb. 2021

HANBOONSONG, DURST, P. **Guidance on sustainable cricket farming**. 2020. 40 p. Disponible en: <https://www.fao.org/3/cb2446en/cb2446en.pdf> Acceso: 10 feb. 2021.

KASSAMBARA, A. GGPUBR: “**ggplot2**” **Based Publication Ready Plots**. R package version 0.5.0. 2023. Disponible en : <https://CRAN.R-project.org/package=ggpubr> Acceso en : 8 sept. 2023.

LENTH, R., BOLKER, B., BUERKNER, P., GINÉ- VÁZQUEZ, I., HERVE, M., JUNG, M., LOVE, J., MIGUEZ, F., RIEBL, H., & SINGMANN, H. Population marginal means in the linear model: An alternative to least squares means. **American Statistician**, v. 34, n. 4, pág. 216–221, sep. 1980. Disponible en: <https://doi.org/10.1080/00031305.1980.10483031> Acceso en 12 feb. 2021.

LUNDY, M. E.; PARRELLA, M. P. **Crickets are not a free lunch: Protein capture from scalable organic side-streams via high-density populations of *Acheta domestica***. 2015. 5 p. doi:10.1371/journal.pone.0118785. Disponible en: <https://journals.plos.org/plosone/article/file?id=10.1371/journal.pone.0118785&type=printable> Acceso en: 10 feb. 2021.

NAKAGAKI, B.J.; DE FOLIART, G.N. Comparison of diets for mass-rearing *Acheta domestica* (Orthoptera: Gryllidae) as a novelty food and comparison of food Conversion efficiency with values reported for livestock. 1991. 895 p. DOI:10.1093/jee/84.3.891. **Journal of Economic Entomology**, 84: 891- 896. Acceso en: 5 feb. 2021.

MAYNARD, D. N.; TALCOTT, S. T., CARLE, R. B. “El Dorado” and “La Estrella”: Compact Plant Tropical Pumpkin Hybrids. In **Hortscience**, v. 37,n.5, p. 831-833, agosto. 2002

MINISTERIO DEL AMBIENTE DEL ECUADOR. **Sistema de Clasificación de los Ecosistemas del Ecuador Continental**. Quito. Subsecretaría de Patrimonio Natural. Quito, 2013. 83 p.

ORINDA M., OLOO J, MAGARA H, AYIEKO M, EKESI S, ROOS N. **Cricket rearing handbook services for science and education United Kingdom: Service For Science and Education**. 2021. 59 p. DOI: 10.14738/eb.86.2020 Acceso en: 10 feb. 2021.

PILCO, T. **Utilización del grillo *Acheta domestica* en la elaboración de productos derivados de cereales: implicaciones nutricionales, funcionales y tecnológicas**. 2021. 38 p. (Maestría en Ciencia y Tecnología de Alimentos). Universidad San Francisco. Quito. 2021.

PATTON, R.L. Oligidic Diets for *Acheta domestica* (Orthoptera: Gryllidae), **Annals of the Entomological Society of America**, v. 60, n. 6, pág. 1238–1242, nov. 1967 Disponible en: <https://doi.org/10.1093/aesa/60.6.1238> Acceso en: 15 feb. 2021.

PATTON, R. L. Growth and development parameters for *Acheta domestica*, **Annals of the Entomological Society of America**, v. 71, n 1, pág. 40–42, enero. 1978. Disponible en: <https://doi.org/10.1093/aesa/71.1.40> Acceso en : 13 feb. 2021.

PORTILLO, E. **Estimación piloto de los costos en la producción y proceso de harina de grillo (*Acheta domestica*), como fuente de proteína para dieta humana, en la finca Santa Marta, Morazán, El Salvador**. 2017. 22 p. Escuela Agrícola Panamericana, Zamorano. Disponible en: <https://bdigital.zamorano.edu/server/api/core/bitstreams/d1db6147-d9ca-4b38-b87e-12ba235e8720/content>. Acceso en: 18 feb. 2021.

PROTEINSECTA. **El grillo como alimento vivo**, Proteinsecta empresa. 2018. Disponible en <https://proteinsecta.es/tienda/alimento-vivo/>. Acceso en: 28 enero. 2019.

TEAM.R.C. (2014). R: A language and environment for statistical computing. R Foundation for Statistical Computing. MSOR connections. Disponible en: <http://www.R-project.org/>. Acceso en: 8 sept. 2023.

SATTERTHWAITE, D.; MCGRANAHAN, G., TACOLI, C. (2010). Urbanization and its implications for food and farming. In **Philosophical Transactions of the Royal Society B: Biological Sciences**, v. 365, n.155, pág. 2809–2820, sept. 2010. Disponible en: <https://doi.org/10.1098/rstb.2010.0136>. Acceso en: 12 feb. 2021.

VACA, J. Evaluación de dietas en la cría y reproducción de grillos (*Acheta domesticus* Linnaeus) para la obtención de harina en la granja experimental La Pradera - Chaltura. 2020. 71 p. Universidad Técnica del Norte, Ibarra, 2020.

VAN BERKUM, S. How Urban Growth in the Global South Affects Agricultural Dynamics and Food Systems Outcomes in Rural Areas: A Review and Research Agenda. **Sustainability**. p 11, enero./feb.2023.

VERVERIS, E. *et al.* systematic review of the nutrient composition, microbiological and toxicological profile of *Acheta domesticus* (house cricket). In **Journal of Food Composition and Analysis**. V. 114. p 10 – 11, jul./agosto. 2022.

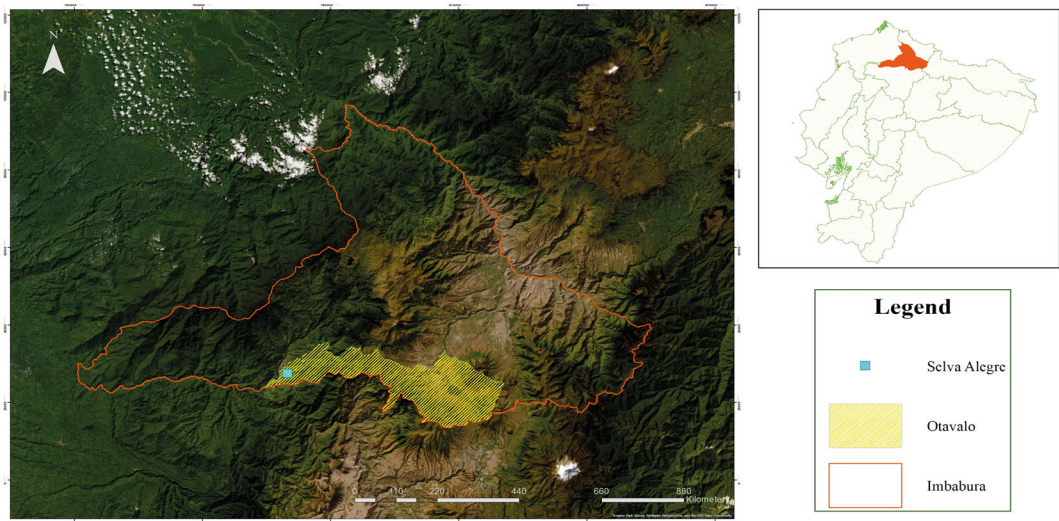


Figure 1. Location map of the Selva Alegre parish where the breeding of *A. domesticus* took place



Figure 2. Experimental units

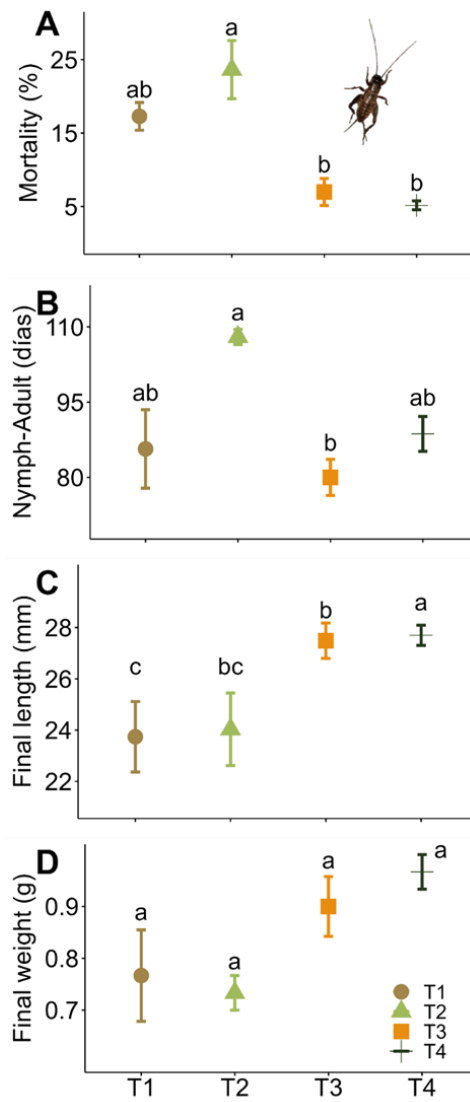


Figure 3. Average values of *A. domesticus* at fourteen weeks of study, referring to its mortality (A), days to adulthood (B), length at the end of the trial (C), and final weight (D). T1 = pumpkin, T2 = Cassava leaves, T3 = Balanced, T4 = Cassava leaves + Pumpkin