



# **BIBLIOTECA CLICÁVEL DE ESTUDOS BIBLIOMÉTRICOS**

**ENSINO-APRENDIZAGEM DA PATERNIDADE NAS  
UNIDADES NEONATAIS**



**HARYLIA MILLENA NASCIMENTO RAMOS**

# APRESENTAÇÃO

Esta biblioteca clicável contém publicações científicas voltadas para o ensino-aprendizagem da paternidade nas Unidades Neonatais.

Para acessar os artigos basta clicar na imagem correspondente ao estudo que deseja abrir.

Este é um produto educacional desenvolvido na disciplina de Estudo bibliométrico sobre a produção científica (EBPC): método de pesquisa online. Sob orientação da Professora Dra. Andrea Marques Vanderlei Fregadoli



ARTIGO ORIGINAL

<http://dx.doi.org/10.1590/1984-0462/2019;37;3;00014>

## INSERÇÃO DO PAI NOS CUIDADOS AO FILHO PREMATURO HOSPITALIZADO: PERCEPÇÃO DA EQUIPE MULTIPROFISSIONAL

Insertion of the father in the care of the hospitalized preterm infant: perception of the multiprofessional team

Natalia Cristine Soares<sup>a</sup>, Maria Piassa Lourenço Bernardino<sup>a</sup>, Adriana Valongo Zani<sup>a\*</sup>

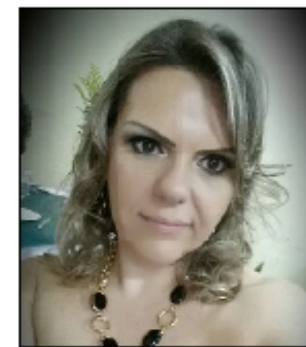


Federal Fluminense University

AURORA DE AFONSO COSTA NURSING SCHOOL



Original Articles



### The early days of the premature child at home: collective subject discourse

Adriana Valongo Zani<sup>1</sup>, Thalís Ramos da Silva<sup>1</sup>, Crístina Maria Garcia de Lima Parada<sup>2</sup>

<sup>1</sup>State University of Londrina  
<sup>2</sup>Ildeu de Menezes Filho Paulista State University

JOURNAL OF CHILD PSYCHOLOGY AND PSYCHIATRY



Journal of Child Psychology and Psychiatry \*\* (2014), pp \*\*-\*\*

doi:10.1111/jcpp.12280

## Practitioner Review: Engaging fathers – recommendations for a game change in parenting interventions based on a systematic review of the global evidence

Catherine Panter-Brick<sup>1</sup>, Adrienne Burgess<sup>2</sup>, Mark Eggerman<sup>3</sup>, Fiona McAllister<sup>2</sup>, Kyle Pruett<sup>4</sup> and James F. Leckman<sup>4</sup>

<sup>1</sup>Department of Anthropology & Jackson Institute, Yale University, New Haven, CT, USA; <sup>2</sup>Fatherhood Institute, London, UK; <sup>3</sup>MacMillan Center for International and Area Studies, Yale University, New Haven, CT, USA; <sup>4</sup>Child Study Center, Yale University, New Haven, CT, USA

Journal of Public Health Research 2016; volume 5:744



Article

### Participatory action research in the field of neonatal intensive care: developing an intervention to meet the fathers' needs. A case study.

Betty Noergaard<sup>1,2</sup>, Helle Johannessen<sup>3</sup>, Jesper Fenger-Gron<sup>1</sup>, Poul-Erik Kofoed<sup>1,2</sup>, Jette Ammentorp<sup>2,4</sup>

<sup>1</sup>Department of Paediatrics, Lillebaelt Hospital; <sup>2</sup>Institute of Regional Health Research, Faculty of Health Sciences, University of Southern Denmark; <sup>3</sup>Research Unit of User Perspectives, Department of Public Health, University of Southern Denmark; <sup>4</sup>Health Services Research Unit, Lillebaelt Hospital, Denmark

ARTICLE IN PRESS

JOGNN

RESEARCH

## A Comparison of Maternal and Paternal Experiences of Becoming Parents of a Very Preterm Infant

Livio Provenzi, Serena Barello, Monica Fumagalli, Guendalina Graffigna, Ida Sirgiovanni, Mariarosaria Savarese, and Rosario Montiroso

Donna Dowling, PhD, RN, and Shelley Thibeau, PhD, RNC-NIC Section Editors

Original Research

## Fathers' Stress in a Neonatal Intensive Care Unit

OPEN

Betty Noergaard, MHS; Jette Ammentorp, MHS, PhD; Ester Garne, MD; Jesper Fenger-Gron, MD; Poul-Erik Kofoed, MD, PhD

Donna Dowling, PhD, RN, and Shelley Thibeau, PhD, RNC-NIC Section Editors

Original Research

## Finding My Way

A Phenomenology of Fathering in the NICU

Rebecca M. Logan, PhD, RN; Sharon Dormire, PhD, RN



## Parent-Infant Closeness, Parents' Participation, and Nursing Support in Single-Family Room and Open Bay NICUs

Bente Silnes Tandberg, MNsc, RN; Kathrine Frey Frøslie, PhD, MSc; Renée Flacking, PhD, RN; Hege Grundt, RN; Liisa Lehtonen, MD, PhD; Atle Moen, MD, PhD

## The Effectiveness of an Intervention Program for Fathers of Hospitalized Preterm Infants on Paternal Support and Attachment 1 Month After Discharge

Yi-Ling Chen, MN, RN; Tzu-Ying Lee, PhD, RN; Meei-Ling Gau, PhD, RN; Kuan-Chia Lin, PhD

### ARTICLE IN PRESS

Journal of Neonatal Nursing xxx (xxxx) xxx–xxx

Contents lists available at ScienceDirect



Journal of Neonatal Nursing

journal homepage: [www.elsevier.com/locate/jnn](http://www.elsevier.com/locate/jnn)



#### Review

Fathers in neonatal units: Improving infant health by supporting the baby-father bond and mother-father coparenting

Duncan Fisher<sup>a</sup>, Minesh Khashu<sup>e,f,\*</sup>, Esther A. Adama<sup>b</sup>, Nancy Feeley<sup>c</sup>, Craig F. Garfield<sup>d</sup>, Jillian Ireland<sup>e,f</sup>, Flora Koliouli<sup>g</sup>, Birgitta Lindberg<sup>h</sup>, Betty Nørgaard<sup>i</sup>, Livio Provenzi<sup>j</sup>, Frances Thomson-Salo<sup>k</sup>, Edwin van Teijlingen<sup>l</sup>

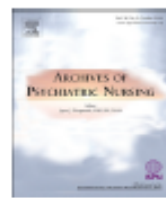
Archives of Psychiatric Nursing 34 (2020) 75–84

Contents lists available at ScienceDirect



Archives of Psychiatric Nursing

journal homepage: [www.elsevier.com/locate/apnu](http://www.elsevier.com/locate/apnu)



Fathers' stress related to their infants' NICU hospitalization: A mixed research synthesis<sup>☆</sup>

Cheryl Tatano Beck<sup>\*</sup>, Timothea Vo

School of Nursing, University of Connecticut, 231 Glenbrook Road, Storrs, CT 06269-4020, United States of America



Advertisement

WILEY  
**NA&E**  
NURSE AUTHOR & EDITOR

Advice on writing quality manuscripts, avoiding rejection, and finding publishing opportunities.

Find out

**JAN**

Leading Global Nursing Research

ORIGINAL RESEARCH: EMPIRICAL RESEARCH – QUANTITATIVE

Factors influencing paternal involvement during infancy: A prospective longitudinal study

影响婴儿时期父亲参与的因素:前瞻性纵向研究

Shafaly Shorey✉, Lina Ang, Esther C.L. Goh, Mihir Gandhi

First published: 12 September 2018 | <https://doi.org/10.1111/jan.13848> | Citations: 4

**Funding information:** This study was funded by the Ministry of Social and Family Development MSF (SFRF 2015-1). The Ministry of Social and Family Development (MSF) does not endorse the research project or its findings, methods, or results in anyway. Any views, findings, or results arising from the research project in the proposed publication is strictly the participants' and authors'.

Journal of Neonatal Nursing (2016) 22, 27–51



**Jnn**

[www.elsevier.com/jneo](http://www.elsevier.com/jneo)

Parents' experiences of caring for preterm infants after discharge from Neonatal Intensive Care Unit: A meta-synthesis of the literature



Esther Abena Adama, BSc (Nursing), MSc (Advanced Nursing), RN PhD Candidate<sup>\*</sup>, Sara Bayes, PGDipMid, MMid; PhD, RN/RM, Senior Lecturer, Deborah Sundin, BSc (Nursing), PhD; RN/RM, Senior Lecturer

JAN

Informing Practice and Policy Worldwide through Research and Scholarship

RESEARCH METHODOLOGY: INSTRUMENT DEVELOPMENT

Development and initial validation of the Parental PELICAN Questionnaire (PaPEQu) – an instrument to assess parental experiences and needs during their child's end-of-life care

Karin Zimmermann, Eva Cignacco, Katri Eskola, Sandra Engberg, Anne-Sylvie Ramelet, Nicolas Von der Weid & Eva Bergstraesser

Received: 28 April 2019 | Revised: 14 July 2019 | Accepted: 19 August 2019  
DOI: 10.1002/nop.2.370



RESEARCH ARTICLE

NursingOpen WILEY

Experiences, mental well-being and community-based care needs of fathers of late preterm infants: A mixed-methods pilot study

Shahirose Sadrudin Premji<sup>1</sup> | Sandra Reilly<sup>2</sup> | Genevieve Currie<sup>3</sup> | Aliyah Dosani<sup>3</sup> | Lynnette May Oliver<sup>2</sup> | Abhay K. Lodha<sup>4,5</sup> | Marilyn Young<sup>5,6</sup> | Marc Hall<sup>2</sup> | Tyler Williamson<sup>4</sup>



ACTA PÆDIATRICA  
NURTURING THE CHILD

Acta Paediatrica ISSN 0803-5253

REGULAR ARTICLE

Factors affecting parents' presence with their extremely preterm infants in a neonatal intensive care room

Ann-Britt Heinemann<sup>1</sup>, Lena Hellström-Westas<sup>1,2</sup>, Kerstin Hedberg Nyqvist (kerstin.hedberg\_nyqvist@kbh.uu.se)<sup>2</sup>  
1.Neonatal Intensive Care Unit, University Children's Hospital, Uppsala, Sweden  
2.Department of Women's and Children's Health, Pediatrics, University Hospital, Uppsala, Sweden

JCN Journal of Clinical Nursing

Journal of  
Clinical Nursing

SUPPORTING PARENTS AND FAMILIES

Fathers' perceptions of the barriers and facilitators to their involvement with their newborn hospitalised in the neonatal intensive care unit

Nancy Feeley, Elana Waitzer, Kathryn Sherrard, Linda Boisvert and Phyllis Zelkowitz

JAN

Leading Global Nursing Research

ORIGINAL RESEARCH: EMPIRICAL RESEARCH – QUALITATIVE

First-time fathers' postnatal experiences and support needs: A descriptive qualitative study

Shafaly Shorey | Cindy-Lee Dennis, Shiho Bridge, Yap Seng Chong, Eleanor Holroyd, Hong-Gu He

JAN

JOURNAL OF ADVANCED NURSING

ORIGINAL RESEARCH

Kangaroo Mother Care helps fathers of preterm infants gain confidence in the paternal role

Ylva Thernström Blomqvist, Christine Rubertsson, Elisabeth Kylberg, Karin Jöreskog & Kerstin Hedberg Nyqvist

Accepted for publication 15 October 2011



REGULAR ARTICLE

## Mothers are not fathers: differences between parents in the reduction of stress levels after a parental intervention in a NICU

S. Matricardi<sup>1</sup>, R. Agostino<sup>1</sup>, C. Fedeli<sup>2</sup>, R. Montiroso (rosario.montiroso@bp.lnf.it)<sup>2</sup>

<sup>1</sup>NICU, Fatebenefratelli – San Giovanni Calibita Hospital, Rome, Italy

<sup>2</sup>Centre 0-3 for the Study of Social Emotional Development of the at Risk Infant, Scientific Institute "E. Medea", Lecco, Italy

REVIEW

## Perinatal mental health: Fathers – the (mostly) forgotten parent

Olivia Wong<sup>1</sup> MBBS MPsych FRANZCP, Tram Nguyen<sup>1,2</sup> MBBS MPsych FRANZCP,  
Naomi Thomas<sup>1</sup> BSc(Hons), PhD(Clin Psych), Frances Thomson-Salo<sup>1,2</sup> PhD,  
Dennis Handrinos<sup>1</sup> MBBS, MPM, FRANZCP & Fiona Judd<sup>1,2</sup> DPM, FRANZCP, MD

<sup>1</sup> Centre for Women's Mental Health, Royal Women's Hospital, Parkville, Australia

<sup>2</sup> Department of Psychiatry, University of Melbourne, Parkville, Australia

ORIGINAL RESEARCH

## The effectiveness of early intervention on paternal stress for fathers of premature infants admitted to a neonatal intensive care unit

Tzu-Ying Lee, Mo-Mei Wang, Kuan-Chia Lin & Chien-Huei Kao

REVIEW

## The lived experience of fathers of preterm infants in the Neonatal Intensive Care Unit: a systematic review of qualitative studies

Livio Provenzi and Elena Santoro

ORIGINAL ARTICLE

## Transition from hospital to home: Parents' perception of their preparation and readiness for discharge with their preterm infant

Laurene Aydon RNRM, NNT, MNsg ✉, Yvonne Hauck BScN, MSc, PhD, Jamee Murdoch BScN, Post Grad N,  
Daphne Siu RNRM, NNT, MNsg, Mary Sharp Dip RACOG, M Med Sci, FRACP

Research Article

## When Father is Not There: The Absence of the Father as a Generating Factor of Violence

Hilda Botèro ✉